



2022 DEMOGRAPHICS
5 Mile | 10 Miles | 15 Miles



Population

13,352 | 48,062 | 25,027



Daytime Population

11,540 | 16,910 | 32,188



Median Household Income

\$54,948 | \$52,097 | \$52,638

FOR SALE

925 Highway 60 | Monett, Missouri 65708

Land Available: 1.03 - 1.10 Acres +/- | Sale Price: \$7.00/SF

PROPERTY DETAILS

High visibility

Ample parking

Strong retail node

Ready for construction

Infrastructure improvements already made
(pad ready, storm water system, & utilities)

Jim Rosen, CCIM

314.785.7625

jrosen@paceproperties.com

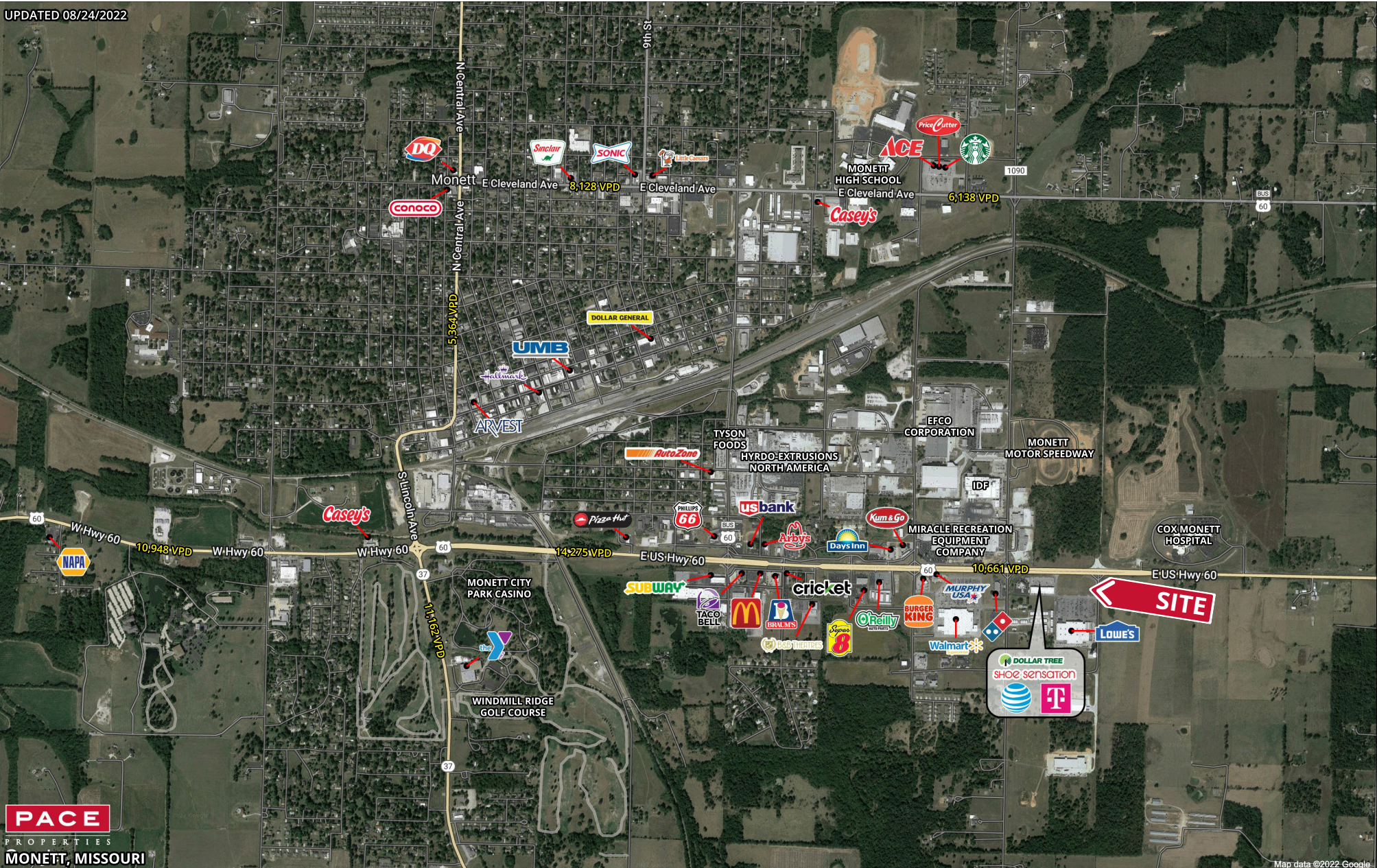
PACEPROPERTIES.COM | 314.968.9898

1401 South Brentwood Boulevard, Suite 900 | St. Louis, Missouri 63144

The information contained herein is not warranted, although it has been obtained from the owner/landlord of the subject property or from other sources that Pace Properties, Inc. deems reliable, and is subject to change without notice. Owner/landlord and Pace Properties, Inc. make no representations as to the environmental condition of the subject property and recommend tenant's independent investigation.

Trade Area Aerial

UPDATED 08/24/2022



PACE
PROPERTIES
MONETT, MISSOURI

Map data ©2022 Google

PACEPROPERTIES.COM | 314.968.9898

1401 South Brentwood Boulevard, Suite 900 | St. Louis, Missouri 63144

The information contained herein is not warranted, although it has been obtained from the owner/landlord of the subject property or from other sources that Pace Properties, Inc. deems reliable, and is subject to change without notice. Owner/landlord and Pace Properties, Inc. make no representations as to the environmental condition of the subject property and recommend tenant's independent investigation.